

**INSTRUMENT  
APPROACH  
CHART - ICAO**

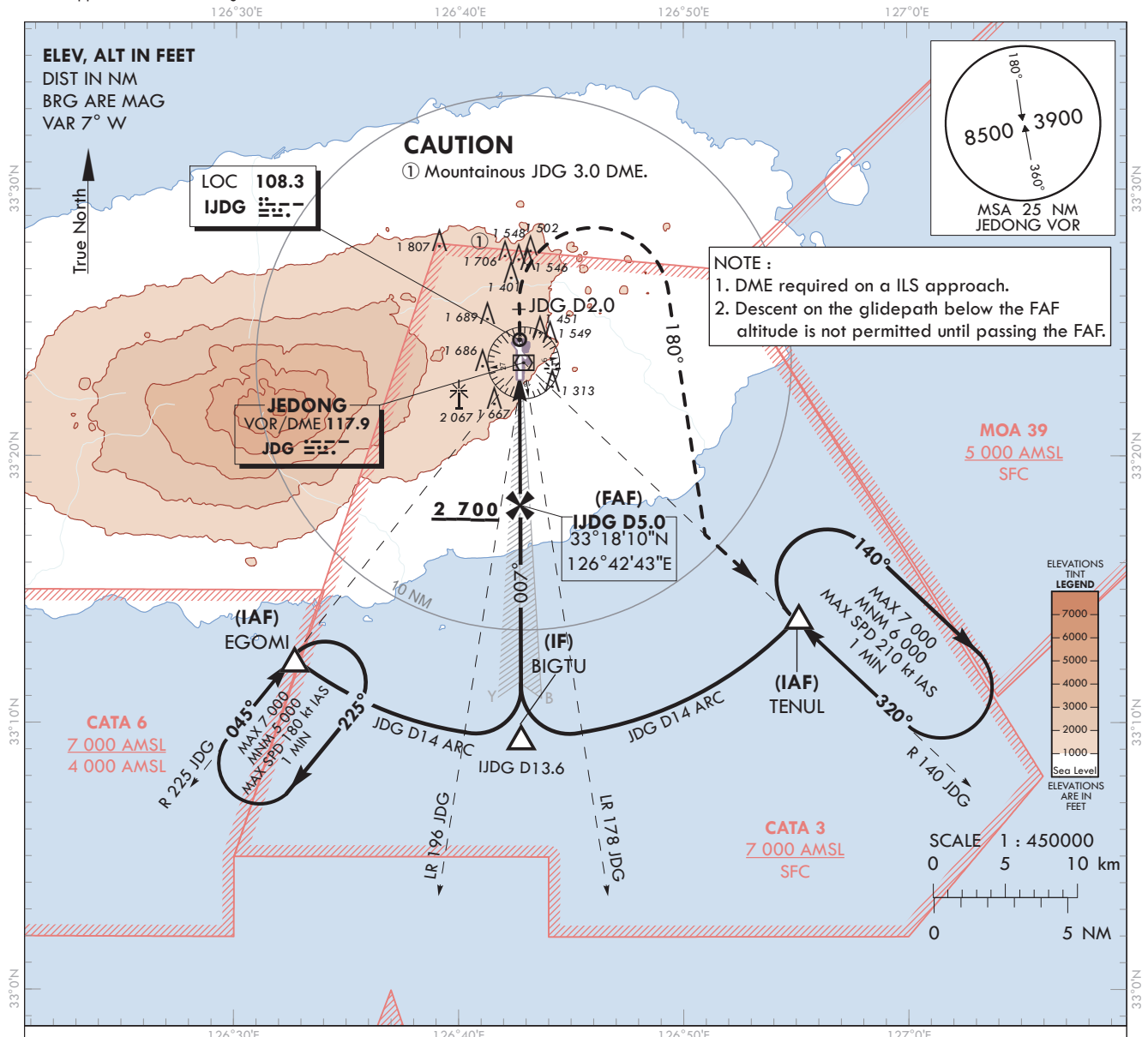
**AERODROME ELEV 1 174 ft**  
HEIGHTS RELATED TO  
THR RWY 01 - ELEV 1 102 ft

JEJU APP 121.2  
124.05  
JEONGSEOK TWR 124.35

**JEJU/Jeongseok(RKPD)**

Note : Approach under ICAO Flight Procedures.

**ILS RWY 01**



TRANSITION ALT 14 000  
TRANSITION LVL FL 140

# **MISSED APPROACH**

Climb straight ahead until JDG D2.0,  
turn right HDG180° to intercept R 140 JDG,  
then proceed to TENUL 6 000 ft and hold.  
Missed approach turn limited to 210 kt IAS maximum.

OCA (H)

A

B

C

D

Straight-in  
Approach

CAT-I (CG 4.0%)

1 302 (200)

CAT-I (CG 2.5%)

1 482 (380)

Knots

60

90

120

150

180

Rate of descent  
(FAF - THR)

V/V fpm

323

485

646

808

970

\* Circling Not authorized.

Change : Information of landing minima(OCA(H)).

JEJU/Jeongseok(RKPD)  
ILS RWY 01

## AERONAUTICAL DATA TABULATION

ILS approach to RWY 01 from TENUL, EGOMI		
Fix/point		Coordinates
TENUL(IAF)	R 140 JDG/14.00 NM	33°14'01.6"N 126°55'08.7"E
EGOMI(IAF)	R 225 JDG/14.00 NM	33°12'24.7"N 126°32'40.7"E
BIGTU(IF)	BRG 187.12°/13.60 NM IJDG	33°09'30.3"N 126°42'46.3"E
D5.0 IJDG (FAF)	BRG 187.12°/4.95 NM IJDG	33°18'10.2"N 126°42'43.3"E
THR RWY01		33°22'58.36"N 126°42'41.71"E
IJDG LOC		33°24'22.7"N 126°42'41.2"E
IJDG DME		33°23'07.8"N 126°42'46.5"E
D2.0 JDG(MATF)	2.00 NM JDG	33°25'31.7"N 126°42'40.8"E
TENUL(MAHF)	R 140 JDG/14.00NM	33°14'01.6"N 126°55'08.7"E

**INSTRUMENT  
APPROACH  
CHART - ICAO**

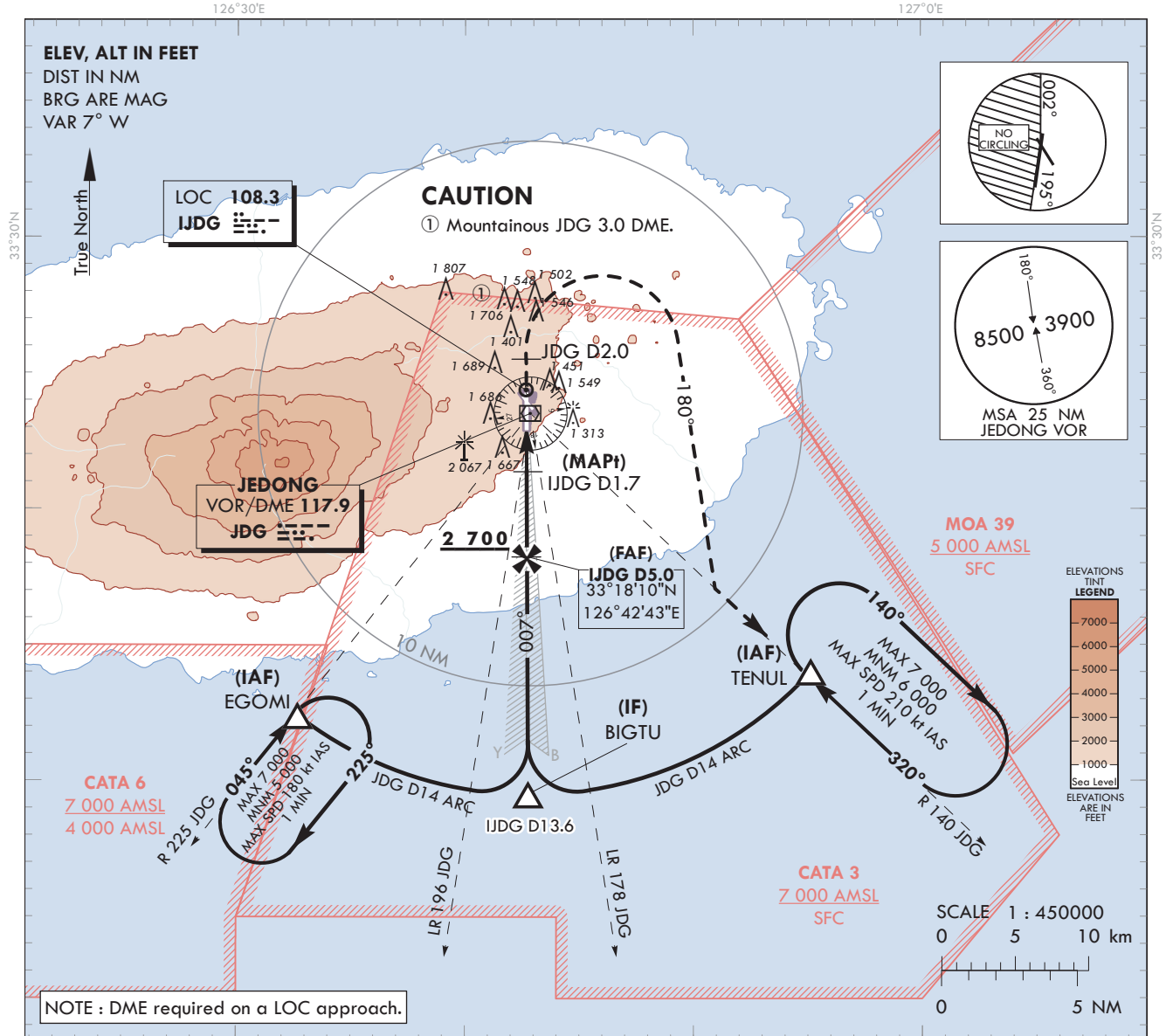
**AERODROME ELEV 1 174 ft**  
HEIGHTS RELATED TO  
THR RWY 01 - ELEV 1 102 ft

JEJU	APP	121.2
JEONGSEOK	TWR	124.35

**JEJU/Jeongseok(RKPD)**

**LOC RWY 01**

Note : Approach under ICAO Flight Procedures.



126°30'E

127°0'E

RECOMMENDED PROFILE

Final Approach Gradient 5.31%, 323 ft/NM

DME IJDG

ALT(HGT)

5

4

3

2

1.7

2 700

2 393

2 070

1 747

1 660

(1 598)

(1 291)

(968)

(645)

(558)

TRANSITION ALT 14 000

TRANSITION LVL FL 140

IAF TENUL

R 140 JDG/D14

6 000

(4 898)

LR 178

LR 196

IF BIGTU

IJDG D13.6

3 800

(2 698)

FAF IJDG D5.0

2 700

(1 598)

MAPt IJDG D1.7

1 660

(558)

VOR/DME JDG LOC

DME IJDG

1 174

(558)

THR ELEV 1 102

(THR RWY 01)

007°

007°

007°

180°

5.31%(3.0°)

JDG D14 ARC

JDG D2.0

NM TO/FROM THR RWY 01

11

9

7

5

3

1

OCA (H)

A

B

C

D

Straight-in Approach

LOC (CG 4.0%)

1 660 (558)

LOC (CG 2.5%)

1 720 (618)

\*Circling

1 920 (746)

2 020 (846)

knots

60

90

120

150

180

Rate of descent (FAF - THR)

V/V fpm

315

473

630

788

945

\* Timing Not authorized for defining MAPt.

\* Circling Not authorized west of RWY 01-19.

Change : Information of landing minima (OCA(H)) and Amended phrase(5.24 % → 5.31 %).

JEJU/Jeongseok(RKPD)  
LOC RWY 01

## AERONAUTICAL DATA TABULATION

LOC approach to RWY 01 from TENUL, EGOMI		
Fix/point		Coordinates
TENUL(IAF)	R 140 JDG/14.00 NM	33°14'01.6"N 126°55'08.7"E
EGOMI(IAF)	R 225 JDG/14.00 NM	33°12'24.7"N 126°32'40.7"E
BIGTU(IF)	BRG 187.12°/13.60 NM IJDG	33°09'30.3"N 126°42'46.3"E
D5.0 IJDG (FAF)	BRG 187.12°/4.95 NM IJDG	33°18'10.2"N 126°42'43.3"E
D1.7 IJDG (MAPt)	BRG 187.12°/1.70 NM IJDG	33°21'25.6"N 126°42'42.2"E
THR RWY01		33°22'58.36"N 126°42'41.71"E
IJDG LOC		33°24'22.7"N 126°42'41.2"E
IJDG DME		33°23'07.8"N 126°42'46.5"E
D2.0 JDG(MATF)	2.00 NM JDG	33°25'31.7"N 126°42'40.8"E
TENUL(MAHF)	R 140 JDG/14.00 NM	33°14'01.6"N 126°55'08.7"E

**INSTRUMENT  
APPROACH  
CHART - ICAO**

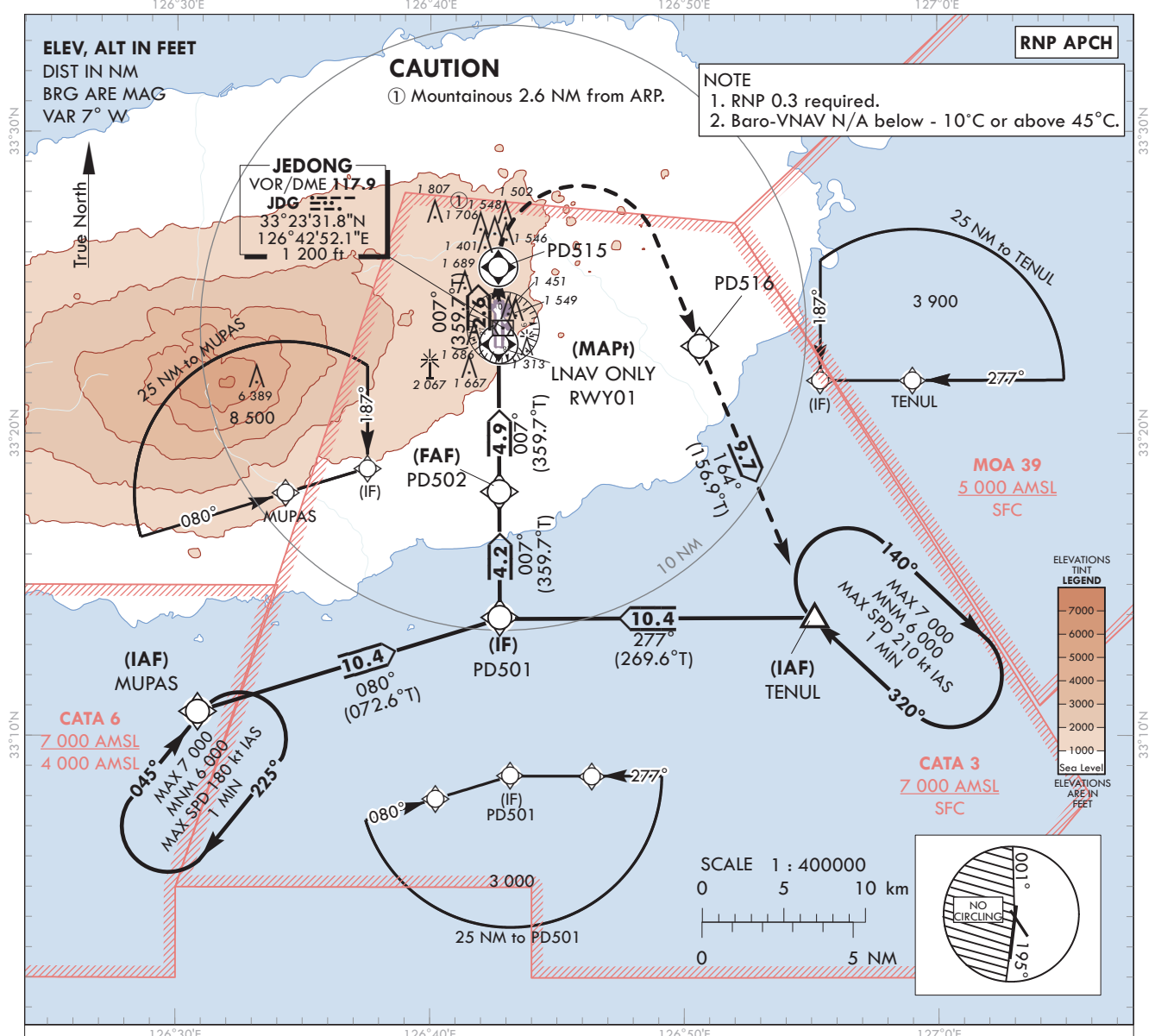
**AERODROME ELEV 1 174 ft**  
HEIGHTS RELATED TO  
THR RWY 01 - ELEV 1 102 ft

JEJU APP 121.2  
124.05  
JEONGSEOK TWR 124.35

**JEJU/Jeongseok(RKPD)**

Note : Approach under ICAO Flight Procedures.

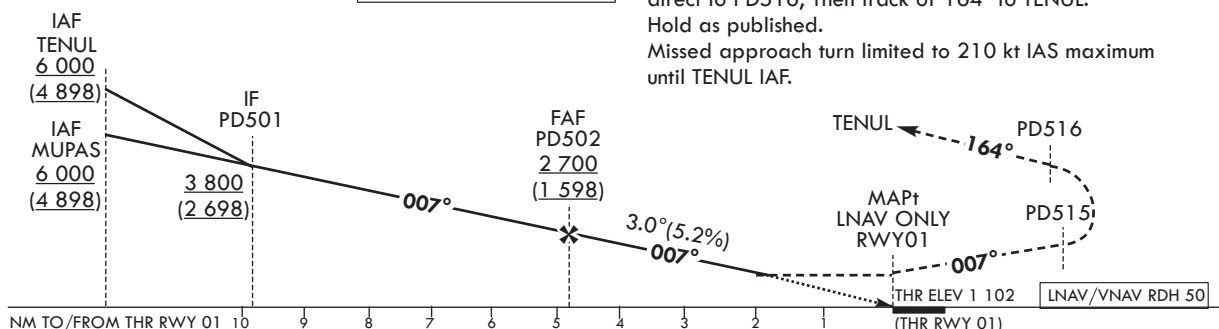
**RNP RWY 01**



TRANSITION ALT 14 000  
TRANSITION LVL FL 140

**MISSED APPROACH**

Climb to 6 000 ft on track of 007° to PD515, turn right direct to PD516, Then track of 164° to TENUL. Hold as published. Missed approach turn limited to 210 kt IAS maximum until TENUL IAF.



OCA (H)		A	B	C	D
Straight-in Approach	LNAV / VNAV	1 730 (628)			
	LNAV	1 830 (728)			
*Circling		1 920 (746)		2 020 (846)	

	knots	60	90	120	150	180
Rate of descent	V/V fpm	318	478	637	796	955

\* Timing not authorized for defining MAPt.  
\* Circling not authorized west of RWY 01-19.

Change : Information of landing minima (OCA(H)).

JEJU/Jeongseok(RKPD)  
RNP RWY 01

## AERONAUTICAL DATA TABULATION

## Instrument Approach Procedure Coding Tables

## RNP RWY01 - via TENUL to PD501(IF)

Serial Number	Path Descriptor	Waypoint Identifier	Fly-over	Course/Track M(°T)	Distance (NM)	Turn direction	Altitude (ft)	Speed (kt)	Coordinates	VPA/ RDH	Navigation specification	Remarks
001	IF	TENUL	-	-	-	-	+6 000	-	33°14'01.6"N 126°55'08.7"E	-	RNP APCH	IAF
002	TF	PD501	-	277(269.6)	10.4	-	+3 800	-	33°13'56.3"N 126°42'44.8"E	-	RNP APCH	IF

## RNP RWY01 - via MUPAS to PD501(IF)

Serial Number	Path Descriptor	Waypoint Identifier	Fly-over	Course/Track M(°T)	Distance (NM)	Turn direction	Altitude (ft)	Speed (kt)	Coordinates	VPA/ RDH	Navigation specification	Remarks
001	IF	MUPAS	-	-	-	-	+6 000	-	33°10'49.1"N 126°30'51.5"E	-	RNP APCH	IAF
002	TF	PD501	-	080(072.6)	10.4	-	+3 800	-	33°13'56.3"N 126°42'44.8"E	-	RNP APCH	IF

## RNP RWY01 - via PD501(IF) to MAHF

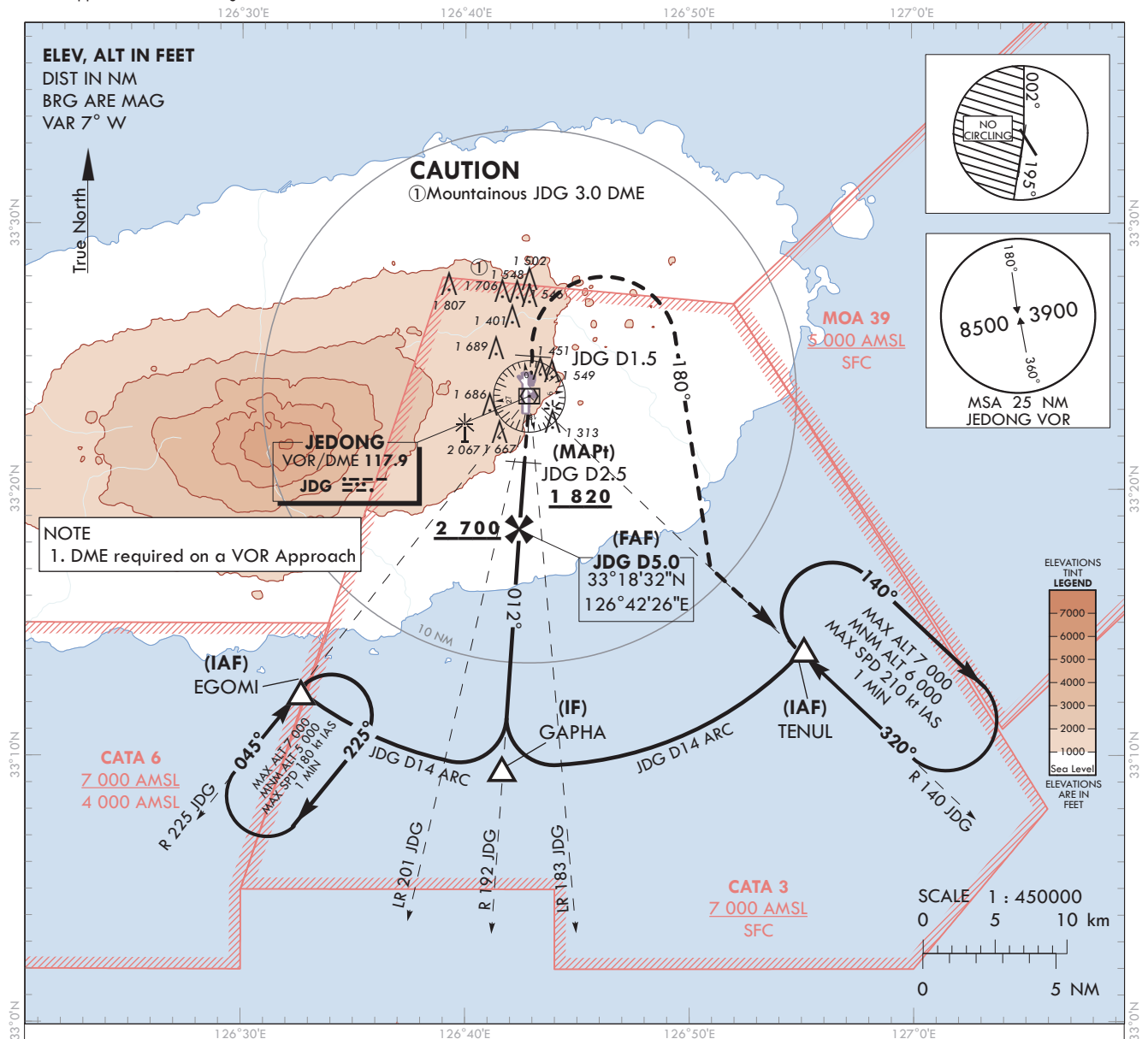
Serial Number	Path Descriptor	Waypoint Identifier	Fly-over	Course/Track M(°T)	Distance (NM)	Turn direction	Altitude (ft)	Speed (kt)	Coordinates	VPA/ RDH	Navigation specification	Remarks
002	TF	PD501	-	-	-	-	+3 800	-	33°13'56.3"N 126°42'44.8"E	-	RNP APCH	IF
003	TF	PD502	-	007(359.7)	4.2	-	+2 700	-	33°18'06.1"N 126°42'43.4"E	-	RNP APCH	FAF
004	TF	RWY01	Y	007(359.7)	4.9	-	+1 830	-	33°22'58.4"N 126°42'41.7"E	3.00/50	RNP APCH	MAPt
005	TF	PD515	Y	007(359.7)	2.6	-	-	-210	33°25'31.7"N 126°42'40.8"E	-	RNP APCH	-
006	DF	PD516	-	-	-	R	-	-210	33°22'55.2"N 126°50'37.5"E	-	RNP APCH	-
007	TF	TENUL	Y	164(156.9)	9.7	-	-	-210	33°14'01.6"N 126°55'08.7"E	-	RNP APCH	Outbound time 1min
008	HM	TENUL	Y	320(312.7)	-	R	-7 000 +6 000	-210	33°14'01.6"N 126°55'08.7"E	-	RNP APCH	

INSTRUMENT  
APPROACH  
CHART - ICAOAERODROME ELEV 1 174 ft  
HEIGHTS RELATED TO  
THR RWY 01 - ELEV 1 102 ftJEJU APP 121.2  
124.05  
JEONGSEOK TWR 124.35

JEJU/Jeongseok(RKPD)

VOR RWY 01

Note : Approach under ICAO Flight Procedures.



RECOMMENDED PROFILE		DME JDG					MISSED APPROACH				
Final Approach Gradient 5.76%, 350 ft/NM		ALT(HGT)	2 700 (1 598)	2 350 (1 248)	2 000 (898)	1 820 (718)	Climb straight ahead until JDG D1.5, turn right HDG 180° to intercept R 140 JDG, then proceed to TENUL 6 000 ft and hold. Missed approach turn limited to 210 kt IAS maximum.				
		TRANSITION ALT 14 000 TRANSITION LVL FL 140									
OCA (H)		A	B	C	D						
Straight-in Approach		1 820 (718)									
*Circling		1 920 (746)		2 020 (846)							
						Rate of descent (FAF - THR)					
						knots 60 90 120 150 180					
						V/V fpm 352 528 704 880 1 056					
						* Timing Not authorized for defining MAPt * Circling Not authorized west of RWY 01-19.					

Change : Information of landing minima (OCA(H)).



JEJU/Jeongseok(RKPD)  
VOR RWY 01

## AERONAUTICAL DATA TABULATION

VOR approach to RWY 01 from TENUL, EGOMI		
Fix/point		Coordinates
TENUL (IAF)	R 140 JDG/14.00 NM	33°14'01.6"N 126°55'08.7"E
EGOMI (IAF)	R 225 JDG/14.00 NM	33°12'24.7"N 126°32'40.7"E
GAPHA(IF)	BRG 191.58°/14.00 NM JDG	33°09'32.5"N 126°41'39.1"E
D5.0 JDG (FAF)	BRG 191.58°/5.00 NM JDG	33°18'32.0"N 126°42'26.0"E
D2.5 JDG (MAPT)	BRG 191.58°/2.50 NM JDG	33°21'01.9"N 126°42'39.0"E
THR RWY01	Final approach descent angle 3.30°	33°22'58.36"N 126°42'41.71"E
JDG VOR/DME		33°23'31.8"N 126°42'52.1"E
D1.5 JDG (MATF)	1.50 NM JDG	33°25'01.7"N 126°42'59.9"E
TENUL (MAHF)	R 140 JDG/14.00 NM	33°14'01.6"N 126°55'08.7"E